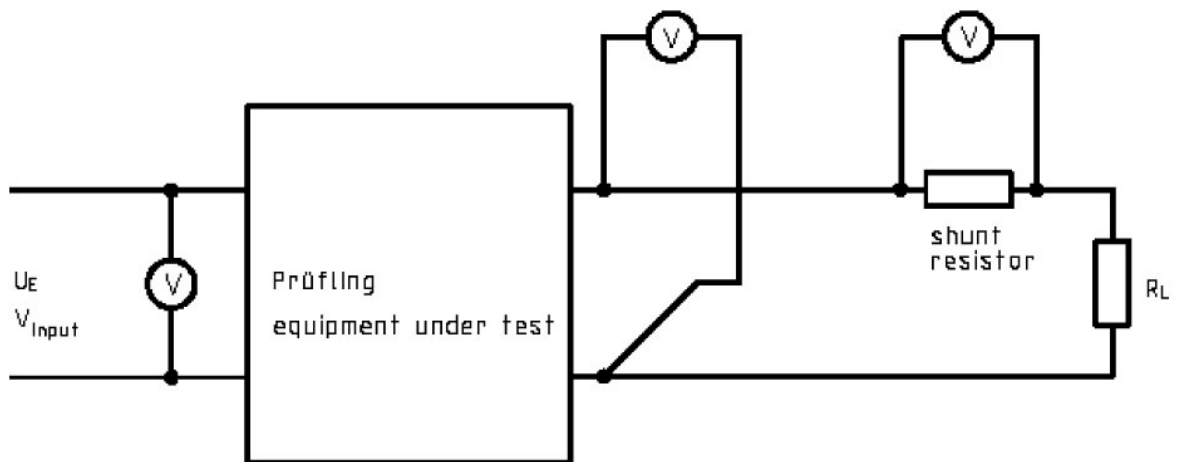


Messanordnungen / Electrical measuring arrangement

Subtitle

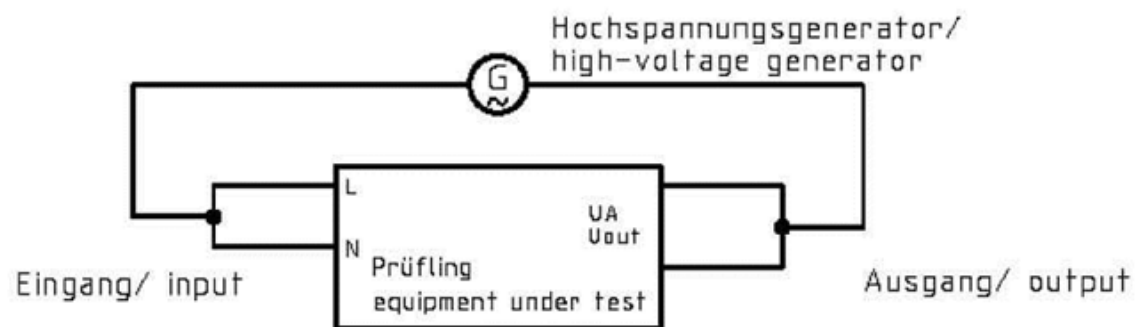
1. Ausgangsspannung / Output voltage



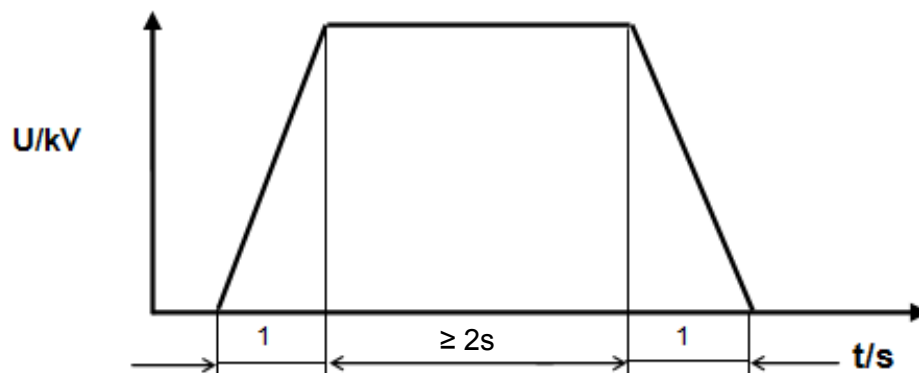
Messanordnungen / Electrical measuring arrangement

Subtitle

2. Hochspannungstest / Insolation test Zwischen Eingang und Ausgang / Between input and output:



Voltage time graph

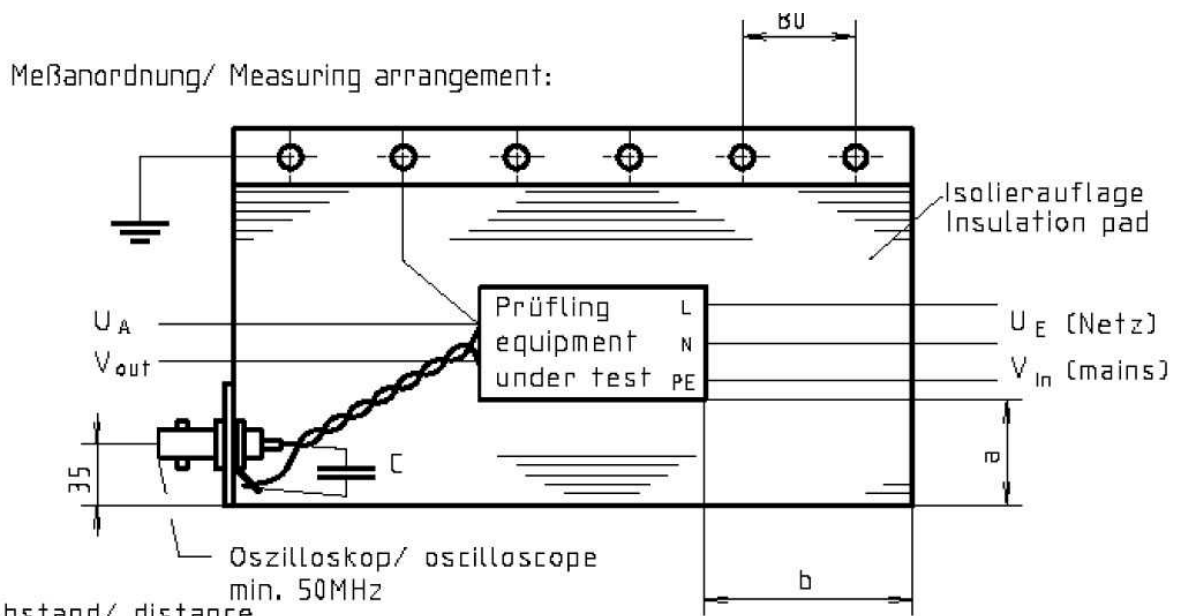


Messanordnungen / Electrical measuring arrangement

Subtitle

3. Spannungsripple / Voltage ripple

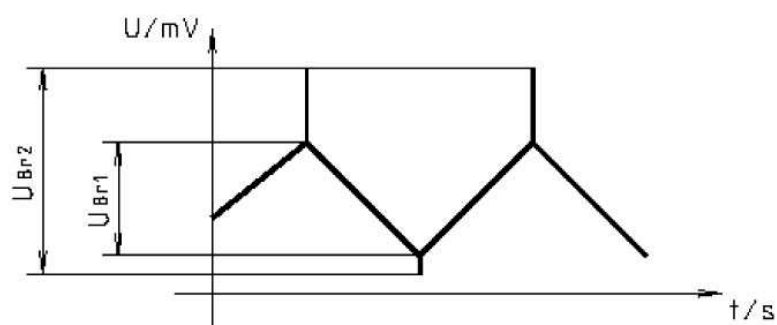
Base-plate:
 Material : Steel ST37
 Insulation pad : Rubber-mat 3.0mm thickness
 Transition point: BNC-connector with capacitor connected in parallel:
 100nF/63V ceramic, parallel to 1 μ F/63V MKT
 Measuring cable: 2x1.5sqmm, twisted pair, 250mm length
 Bandwidth limit: 20MHz



Abstand/ distance

$a = 100\text{mm}$

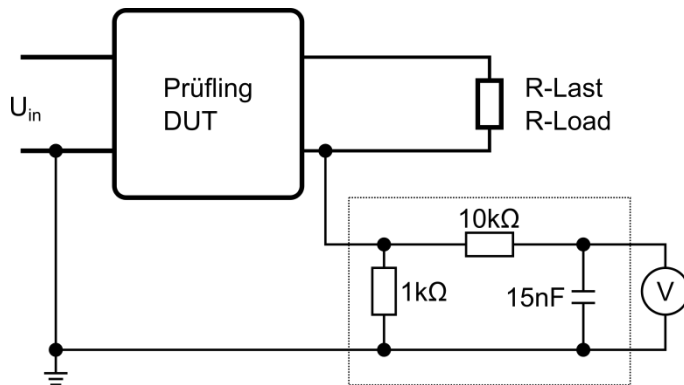
$b = 100\text{mm}$



Messanordnungen / Electrical measuring arrangement

Subtitle

4. Ableitstrom / Leakage Current



Messimpedanz des Spannungsmessgerätes/ Measuring impedance of the Voltmeter:

$R_i > 1M\Omega$